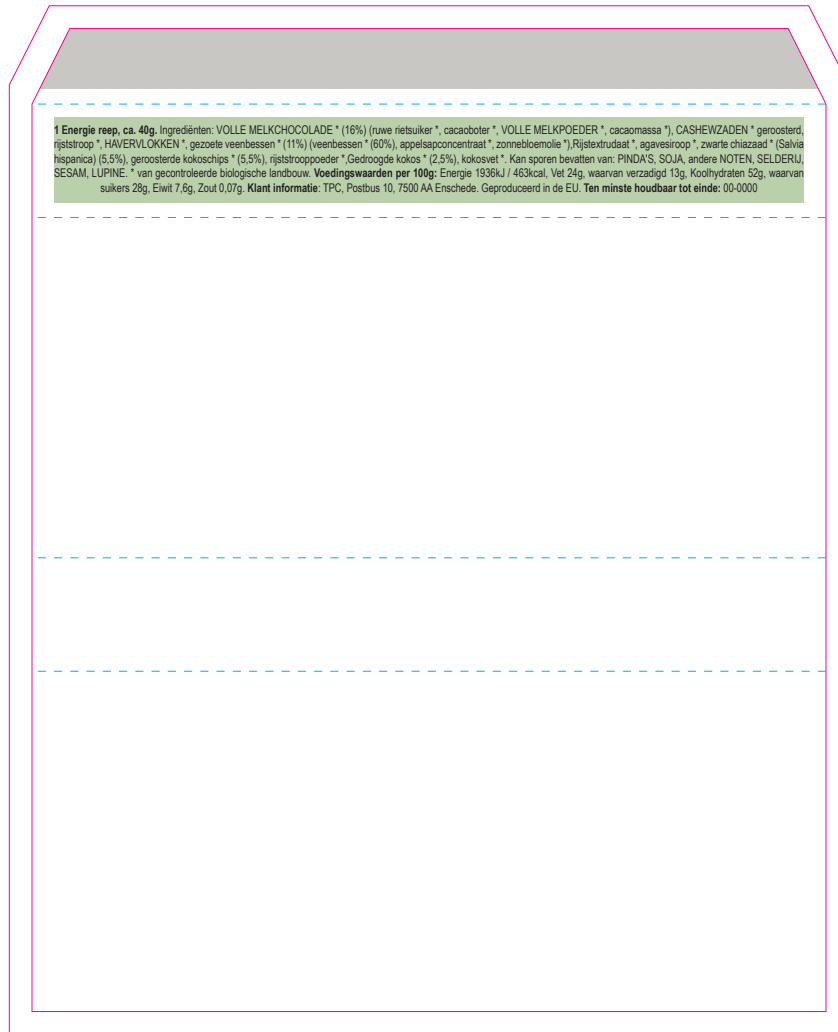


7330

ENERGIE REEP CRANBERRY-KOKOS / ENERGY BAR CRANBERRY-COCONUT /
BIO RIEGEL CRANBERRY-KOKOSNUSS

Drukformaat / print size / Druckformat / format d'impression:
105 x 130 mm



<p>NL</p> <p>1 Energie reep, ca. 40g. Ingrediënten: VOLLE MELKCHOCOLADE* (16%) (ruwe rietsuiker*, cacao boter*, VOLLE MELKPOEDER*, cacao massa*), CASHEWZADEN* geroosterd, rijststroop*, HAVERVLOKKEN*, gezepte veenbessen* (11%) (veenbessen* (60%), appelsapconcentraat*, zonnebloemolie*), Rijstextrudaat*, agavesiroop*, zwarte chiazaad* (Salvia hispanica) (5.5%), geroosterde kokoschips* (5.5%), rijststroopvoeder*, Gedroogde kokos* (2.5%), kokosvet*. Kan sporen bevatten van: PINDAS, SOJA, andere NOTEN, SELDERIJ, SESAM, LUPINE. * van gecontroleerde biologische landbouw. Voedingswaarden per 100g: Energie 1936kJ / 463kcal, Vet 24g, waarvan verzadigd 13g, Koolhydraten 52g, waarvan suikers 28g, Eiwit 7.6g, Zout 0.07g. Klant informatie: TPC, Postbus 10, 7500 AA Enschede. Geproduceerd in de EU. Ten minste houdbaar tot einde: 00-0000</p>	<p>EN</p> <p>1 Energy bar, approx. 40g. Ingredients: WHOLE MILK CHOCOLATE* (16%) (raw cane sugar*, cocoa butter*, WHOLE MILK POWDER*, cocoa mass*), CASHEW SEEDS* roasted, rice syrup*, OAT FLAKES*, sweetened cranberries* (11%) (cranberries* (60%), apple juice concentrate*, sunflower oil*), Rice extrudate*, agave syrup*, black chia seeds* (Salvia hispanica) (5.5%), toasted coconut chips* (5.5%), rice syrup powder*, Desiccated coconut* (2.5%), coconut fat*. May contain traces of PEANUTS, SOYA, other NUTS, CELERY, SESAME, LUPINE. * from controlled organic agriculture. Nutritional values per 100g: Energy 1936kJ / 463 kcal Fat 24g, of which saturated 13g, Carbohydrates 52g of which sugars 28g, Protein 7.6g, Salt 0.07g. Customer information: TPC, PO Box 10, 7500 AA Enschede. Produced in EU. Best before end: 00-0000</p>	<p>DU</p> <p>1 Riegel, ca. 40g. Zutaten: VOLLMILCHSCHOKOLADE* (16%) (Rohrohrzucker*, Kakaobutter*, VOLLMILCHPULVER*, Kakaomasse*), CASHEWNERNE* geröstet, Reissirup*, HAVERVLOKKEN*, gesüßte Cranberries* (11%) (Cranberries* (60%), Apfelsaftkonzentrat*, Sonnenblumenöl*), Reis-Extrudat*, Agavendicksaft*, schwarze Chiasamen* (Salvia hispanica) (5.5%), getoastete Kokoschips* (5.5%), Reissiruppulver*, Kokosraspeln* (2.5%), Kokosfett*. Kann Spuren enthalten von: ERDNÜSSEN, SOJA, anderen SCHALENFRÜCHTEN, SELLERIE, SESAM, LUPINE. *aus kontrolliert ökologischer Landwirtschaft. Nährwerte pro 100g: Energie 1936kJ / 463kcal, Fett 24g, davon gesättigt 13g, Kohlenhydrate 52g, davon Zucker 28g, Protein 7.6g, Salz 0.07g. Kundeninformation: TPC, Postfach 10, 7500 AA Enschede. Produziert in der EU. Mindestens haltbar bis Ende: 00-0000</p>	<p>FR</p> <p>1 Energy bar, approx. 40g. Ingrédients: WHOLE MILK CHOCOLATE* (16%) (raw cane sugar*, cocoa butter*, WHOLE MILK POWDER*, cocoa mass*), CASHEW SEEDS* roasted, rice syrup*, OAT FLAKES*, sweetened cranberries* (11%) (cranberries* (60%), apple juice concentrate*, sunflower oil*), Rice extrudate*, agave syrup*, black chia seeds* (Salvia hispanica) (5.5%), toasted coconut chips* (5.5%), rice syrup powder*, Desiccated coconut* (2.5%), coconut fat*. May contain traces of: PEANUTS, SOYA, other NUTS, CELERY, SESAME, LUPINE. * from controlled organic agriculture. Valeurs nutritionnelles pour 100g: Energy 1936kJ / 463kcal, Fat 24g, of which saturated 13g, Carbohydrates 52g, of which sugars 28g, Protein 7.6g, Salt 0.07g. Informations client: TPC, PO Box 10, 7500 AA Enschede. Produit dans l'UE. À consommer de préférence avant la fin: 00-0000</p>
<p>BEDRUKKINGS FORMAAT PRINTING SURFACE BEDRUCKBARE FLACHE SURFACE D'IMPRESSIION</p>	<p>VOUWLIJN FOLDING LINE FALZLINIE LIGNE DE PLIAGE</p>	<p>AFLOOP BLEED BESCHNITT FOND PERDU</p>	<p>GEEN TEKST PLAATSEN NO TEXT HERE KEIN TEXT HIER PAS DE TEXTE ICI</p>