



# TEST REPORT

Reference No. : SZ2021100531-1R1E

Date : Nov. 18, 2021

Page No.: 1 of 23

Client : Mid Ocean Brands B.V.

Address : 7/F., Kings Tower, 111 King Lam Street, Cheung Sha Wan, Kowloon, Hong Kong

The following merchandise was (were) submitted and identified by the client as:


Name of Product : Double wall stainless steel bottle  
Test Model : MO6272, MO9421, MO6371, MO6360  
Model May Cover : /  
Main Material: stainless steel,PP,silicone,bamboo  
Supplier: 100396  
Buyer: Mid Ocean Brands B.V.  
Sample Received : Oct. 19, 2021  
Nov. 11, 2021  
Test Period : Oct. 19, 2021 - Oct. 27, 2021  
Nov. 11, 2021 - Nov. 17, 2021

Test Specification and Conclusion:

Please refer to next page

---

**THIS REPORT IS TO SUPERSEDE TEST REPORT SZ2021100531-1E.**

Prepared By :   
David Chen  
Testing Engineer

Reviewed By :   
Dora Cheng  
Reporter Supervisor

Issued By :   
  
Ada Wang  
Lab Manager



SZ2021100531-1E

STQ Testing Services Co., Ltd.

Add.: Building 1, 15 Yinzhong Road, High-new district, Suzhou, China 215129

Tel.: +86/(0)512 67991866

Fax: +86/(0)512 87661802

Web: [www.stq-cert.com](http://www.stq-cert.com)

Technical service: [TS@stq-cert.com](mailto:TS@stq-cert.com)

Customer service: [CS@stq-cert.com](mailto:CS@stq-cert.com)



# TEST REPORT

Reference No. : SZ2021100531-1R1E

Date : Nov. 18, 2021

Page No.: 2 of 23

Test Specification		Conclusion
1.	Lead (Pb) content according to EC Regulation 1907/2006, REACH Annex XVII (entry 63)	PASS
2.	Cadmium (Cd) content according to EC Regulation 1907/2006, REACH Annex XVII (entry 23)	PASS
3.	Cadmium (Cd) content according to Client's Requirement	PASS
4.	Formaldehyde Release according to Client's Requirement	See Result
5.	Phthalate content according to EC Regulation 1907/2006, REACH Annex XVII (entry 51&52)	PASS
6.	Bisphenol-A (BPA) content according to French law No 2012-1442	PASS
Commission Regulation (EU) No 10/2011 and its subsequent amendment Regulation EU No.1282/2011, 1183/2012, 202/2014 and Regulation (EU) 2016/1416, (EU) 2017/752, (EU) 2018/213, (EU) 2020/1245 on plastic materials and articles intended to come into contact with foodstuffs, General Requirement(Article 3) in EU Regulation No. 1935/2004		
7.	Overall Migration test for PP	PASS
8.	Soluble Heavy Metals for PP	PASS
9.	Specific Migration of Primary Aromatic Amine for PP	PASS
Technical Guide on Metals and Alloys used in food contact materials and articles of the 1 <sup>st</sup> edition in 2013, General Requirement(Article 3) in EU Regulation No. 1935/2004		
10.	Extractable Heavy Metals for metal	PASS
French Arrêté du 25 November 1992, French Décret 92-631 and French recommendation DGCCRF 2004-64 and its amendment Décret no 2007-766 du 10 mai 2007, General Requirement (Article 3) in EU Regulation No. 1935/2004		
7.	Overall Migration test for Silicone rubber	PASS
11.	Peroxide value for Silicone rubber	PASS
12.	Volatile Organic Matter (VOM) for Silicone rubber	PASS
13.	Specific migration of organotin (as Tin) for Silicone rubber	PASS
14.	Bisphenol-A (BPA) Content for Silicone rubber	PASS

\*\*\*\*\* To be continued \*\*\*\*\*

STQ Testing Services Co., Ltd.

Add.: Building 1, 15 Yinzhu Road, High-new district, Suzhou, China 215129

Tel.:+86/(0)512 67991866

Fax: +86/(0)512 87661802

Web:www.stq-cert.com

Technical service: [TS@stq-cert.com](mailto:TS@stq-cert.com)

Customer service: [CS@stq-cert.com](mailto:CS@stq-cert.com)

# TEST REPORT

Reference No. : SZ2021100531-1R1E

Date : Nov. 18, 2021

Page No.: 3 of 23

## TEST RESULTS:

### 1. Lead(Pb) Content

**Test Method:** With reference to EPA 3052-1996 & EPA 6010D-2018, Analysis was performed by ICP-OES.

Test Item(s)	MDL (mg/kg)	Test Result(s) (mg/kg)		Limited Value <sup>①</sup> (mg/kg)
		1#	2# <sup>△</sup>	
Lead(Pb)	10	N.D.	N.D.	500

Test Item(s)	MDL (mg/kg)	Test Result(s) (mg/kg)		Limited Value <sup>①</sup> (mg/kg)
		5# <sup>△</sup>	(4#+7#+8#) <sup>△</sup>	
Lead(Pb)	10	N.D.	N.D.	500

Test Item(s)	MDL (mg/kg)	Test Result(s) (mg/kg)		Limited Value <sup>①</sup> (mg/kg)
		12# <sup>△</sup>	13# <sup>△</sup>	
Lead(Pb)	10	N.D.	N.D.	500

**Test Method:** With reference to EPA 3050B-1996 & EPA 6010D-2018, Analysis was performed by ICP-OES.

Test Item(s)	MDL (mg/kg)	Test Result(s) (mg/kg)			Limited Value <sup>①</sup> (mg/kg)
		3# <sup>△</sup>	6# <sup>△</sup>	9# <sup>△</sup>	
Lead(Pb)	10	N.D.	N.D.	N.D.	500

Test Item(s)	MDL (mg/kg)	Test Result(s) (mg/kg)		Limited Value <sup>①</sup> (mg/kg)
		10# <sup>△</sup>	11# <sup>△</sup>	
Lead(Pb)	10	N.D.	N.D.	500

**Remark:** <sup>①</sup>The Limited value is based on EC Regulation 1907/2006, REACH Annex XVII (entry 63).

\*\*\*\*\* To be continued \*\*\*\*\*

# TEST REPORT

Reference No. : SZ2021100531-1R1E

Date : Nov. 18, 2021

Page No.: 4 of 23

## 2. Cadmium (Cd) Content

**Test Method:** With reference to EN 1122-2001 Method B, Analysis was performed by ICP-OES.

Test Item(s)	MDL (mg/kg)	Test Result(s) (mg/kg)		Limited Value <sup>②</sup> (mg/kg)
		2# <sup>△</sup>	5# <sup>△</sup>	
Cadmium (Cd)	10	N.D.	N.D.	100

Test Item(s)	MDL (mg/kg)	Test Result(s) (mg/kg)	Limited Value <sup>②</sup> (mg/kg)
		(4#+7#+8#) <sup>△</sup>	
Cadmium (Cd)	10	N.D.	100

Test Item(s)	MDL (mg/kg)	Test Result(s) (mg/kg)		Limited Value <sup>②</sup> (mg/kg)
		12# <sup>△</sup>	13# <sup>△</sup>	
Cadmium (Cd)	10	N.D.	N.D.	100

**Remark:** <sup>②</sup>The Limited value is based on EC Regulation 1907/2006, REACH Annex XVII (entry 23).

## 3. Cadmium (Cd) Content

**Test Method:** With reference to EPA 3050B-1996 & EPA 6010D-2018, Analysis was performed by ICP-OES.

Test Item(s)	MDL (mg/kg)	Test Result(s) (mg/kg)			Client's Requirement (mg/kg)
		3# <sup>△</sup>	6# <sup>△</sup>	9# <sup>△</sup>	
Cadmium (Cd)	10	N.D.	N.D.	N.D.	100

Test Item(s)	MDL (mg/kg)	Test Result(s) (mg/kg)		Client's Requirement (mg/kg)
		10# <sup>△</sup>	11# <sup>△</sup>	
Cadmium (Cd)	10	N.D.	N.D.	100

\*\*\*\*\* To be continued \*\*\*\*\*

# TEST REPORT

Reference No. : SZ2021100531-1R1E

Date : Nov. 18, 2021

Page No.: 5 of 23

## 4. Formaldehyde Release

**Test Method:** With reference to EN 717-3-1996, Analysis was performed by UV-Vis.

Test Item(s)	Moisture content (%)	MDL (mg/kg)	Test Result(s) (mg/kg)		
			2#-1 <sup>△</sup>	2#-2 <sup>△</sup>	Mean <sup>△</sup>
Formaldehyde Release	9.0	10	N.D.	N.D.	N.D.

Test Item(s)	Moisture content (%)	MDL (mg/kg)	Test Result(s) (mg/kg)		
			13#-1 <sup>△</sup>	13#-2 <sup>△</sup>	Mean <sup>△</sup>
Formaldehyde Release	7.0	10	11	14	12

\*\*\*\*\* To be continued \*\*\*\*\*

# TEST REPORT

Reference No. : SZ2021100531-1R1E

Date : Nov. 18, 2021

Page No.: 6 of 23

## 5. Phthalates Content

**Test Method:** With reference to EN 14372:2004, Analysis was performed by GC-MS.

(1-1) For plasticized materials (including toys and childcare articles)

Test Item(s)	Unit	MDL	Test Result(s)		Limited Value <sup>③</sup>
			(4#+7#) <sup>Δ</sup>	5# <sup>Δ</sup>	
Dibutyl Phthalate((DBP)	%	0.005	N.D.	N.D.	---
Benzylbutyl Phthalate(BBP)		0.005	N.D.	N.D.	---
Di-(2-ethylhexyl)Phthalate(DEHP)		0.005	N.D.	N.D.	---
Di-isobutyl phthalate (DIBP)		0.005	N.D.	N.D.	---
Total (DBP+BBP+DEHP+DIBP)		---	< 0.020	< 0.020	< 0.1

(1-2) For toys and childcare articles that can be mouthed

Test Item(s)	Unit	MDL	Test Result(s)		Limited Value <sup>③</sup>
			(4#+7#) <sup>Δ</sup>	5# <sup>Δ</sup>	
Di-iso-nonylphthalate(DINP)	%	0.005	N.D.	N.D.	---
Di-n-octylphthalate(DNOP)		0.005	N.D.	N.D.	---
Di-iso-decylphthalate(DIDP)		0.005	N.D.	N.D.	---
Total (DINP+DNOP+DIDP)		---	< 0.015	< 0.015	< 0.1

**Remark:** <sup>③</sup>The Limited value is based on EC Regulation 1907/2006, REACH Annex XVII (entry 51&52).

## 6. Bisphenol-A (BPA) Content

**Test Method:** With reference to EPA 3550C-2007, Analysis was performed by LC.

Test Item(s)	Unit	MDL	Test Result(s)		Limited Value <sup>④</sup>
			4# <sup>Δ</sup>	7# <sup>Δ</sup>	
Bisphenol-A (BPA)	mg/kg	0.1	N.D.	N.D.	Prohibition

**Remark:** <sup>④</sup>The Limited value is based on French law No 2012-1442.

\*\*\*\*\* To be continued \*\*\*\*\*

# TEST REPORT

Reference No. : SZ2021100531-1R1E

Date : Nov. 18, 2021

Page No.: 7 of 23

## 7. Overall Migration Test

**Test Method:** With reference to EN 1186-1:2002 for selection of conditions and test methods;  
EN 1186-3:2002 aqueous food simulants by total immersion method.

### Surface area(dm<sup>2</sup>)/Volume(ml):

1# 1/100

4# 1/100

5# 1/100

7# 1/100

Simulants	Unit	Test Condition	Result(s)			Maximum Permissible Limit	Conclusion*
			1#-1 <sup>st</sup>	1#-2 <sup>nd</sup>	1#-3 <sup>rd</sup>		
3% acetic acid	mg/dm <sup>2</sup>	2 hours at 70°C	<3.0	<3.0	<3.0	10	PASS
50% ethanol	mg/dm <sup>2</sup>	2 hours at 70°C	<3.0	<3.0	<3.0	10	PASS

Simulants	Unit	Test Condition	Result(s) <sup>Δ</sup>			Maximum Permissible Limit	Conclusion*
			4#-1 <sup>st</sup>	4#-2 <sup>nd</sup>	4#-3 <sup>rd</sup>		
3% acetic acid	mg/dm <sup>2</sup>	2 hours at 70°C	<3.0	<3.0	<3.0	10	PASS
50% ethanol	mg/dm <sup>2</sup>	2 hours at 70°C	<3.0	<3.0	<3.0	10	PASS

Simulants	Unit	Test Condition	Result(s) <sup>Δ</sup>			Maximum Permissible Limit	Conclusion*
			5#-1 <sup>st</sup>	5#-2 <sup>nd</sup>	5#-3 <sup>rd</sup>		
3% acetic acid	mg/kg	2 hours at 70°C	<10	<10	<10	60	PASS
50% ethanol	mg/kg	2 hours at 70°C	<10	<10	<10	60	PASS

Simulants	Unit	Test Condition	Result(s) <sup>Δ</sup>			Maximum Permissible Limit	Conclusion*
			7#-1 <sup>st</sup>	7#-2 <sup>nd</sup>	7#-3 <sup>rd</sup>		
3% acetic acid	mg/dm <sup>2</sup>	2 hours at 70°C	<3.0	<3.0	<3.0	10	PASS
50% ethanol	mg/dm <sup>2</sup>	2 hours at 70°C	<3.0	<3.0	<3.0	10	PASS

\*\*\*\*\* To be continued \*\*\*\*\*

# TEST REPORT

Reference No. : SZ2021100531-1R1E

Date : Nov. 18, 2021

Page No.: 8 of 23

## 8. Soluble Heavy Metals

**Test Method:** Sample preparation in 3% Acetic acid at 70°C for 2 hours, followed by analysis using Inductively Coupled Plasma Optical Emission Spectrometer.

**Surface area(dm<sup>2</sup>)/Volume(ml):**

1# 1/167

4# 1/167

7# 1/167

Test Item(s)	Unit	Result(s)			Maximum Permissible Limit
		1#-1 <sup>st</sup>	1#-2 <sup>nd</sup>	1#-3 <sup>rd</sup>	
Soluble Aluminium	mg/kg	<0.1	<0.1	<0.1	1
Soluble Antimony	mg/kg	<0.01	<0.01	<0.01	0.04
Soluble Arsenic	mg/kg	<0.01	<0.01	<0.01	0.01
Soluble Barium	mg/kg	<0.1	<0.1	<0.1	1
Soluble Cadmium	mg/kg	<0.001	<0.001	<0.001	0.002
Soluble Chromium	mg/kg	<0.01	<0.01	<0.01	0.01
Soluble Cobalt	mg/kg	<0.01	<0.01	<0.01	0.05
Soluble Copper	mg/kg	<0.1	<0.1	<0.1	5
Soluble Iron	mg/kg	<5	<5	<5	48
Soluble Lead	mg/kg	<0.01	<0.01	<0.01	0.01
Soluble Lithium	mg/kg	<0.01	<0.01	<0.01	0.6
Soluble Manganese	mg/kg	<0.01	<0.01	<0.01	0.6
Soluble Mercury	mg/kg	<0.01	<0.01	<0.01	0.01
Soluble Nickel	mg/kg	<0.01	<0.01	<0.01	0.02
Soluble Zinc	mg/kg	<0.1	<0.1	<0.1	5
Soluble Tungsten	mg/kg	<0.01	<0.01	<0.01	0.05
Soluble Europium	mg/kg	<0.01	<0.01	<0.01	Sum≤0.05
Soluble Gadolinium	mg/kg	<0.01	<0.01	<0.01	
Soluble Lanthanum	mg/kg	<0.01	<0.01	<0.01	
Soluble Terbium	mg/kg	<0.01	<0.01	<0.01	
<b>Conclusion*</b>	---	<b>PASS</b>			---

\*\*\*\*\* To be continued \*\*\*\*\*



# TEST REPORT

Reference No. : SZ2021100531-1R1E

Date : Nov. 18, 2021

Page No.: 9 of 23

Test Item(s)	Unit	Result(s) <sup>Δ</sup>			Maximum Permissible Limit
		4#-1 <sup>st</sup>	4#-2 <sup>nd</sup>	4#-3 <sup>rd</sup>	
Soluble Aluminium	mg/kg	<0.1	<0.1	<0.1	1
Soluble Antimony	mg/kg	<0.01	<0.01	<0.01	0.04
Soluble Arsenic	mg/kg	<0.01	<0.01	<0.01	0.01
Soluble Barium	mg/kg	<0.1	<0.1	<0.1	1
Soluble Cadmium	mg/kg	<0.001	<0.001	<0.001	0.002
Soluble Chromium	mg/kg	<0.01	<0.01	<0.01	0.01
Soluble Cobalt	mg/kg	<0.01	<0.01	<0.01	0.05
Soluble Copper	mg/kg	<0.1	<0.1	<0.1	5
Soluble Iron	mg/kg	<5	<5	<5	48
Soluble Lead	mg/kg	<0.01	<0.01	<0.01	0.01
Soluble Lithium	mg/kg	<0.01	<0.01	<0.01	0.6
Soluble Manganese	mg/kg	0.038	<0.01	<0.01	0.6
Soluble Mercury	mg/kg	<0.01	<0.01	<0.01	0.01
Soluble Nickel	mg/kg	<0.01	<0.01	<0.01	0.02
Soluble Zinc	mg/kg	0.149	<0.1	<0.1	5
Soluble Tungsten	mg/kg	<0.01	<0.01	<0.01	0.05
Soluble Europium	mg/kg	<0.01	<0.01	<0.01	Sum≤0.05
Soluble Gadolinium	mg/kg	<0.01	<0.01	<0.01	
Soluble Lanthanum	mg/kg	<0.01	<0.01	<0.01	
Soluble Terbium	mg/kg	<0.01	<0.01	<0.01	
<b>Conclusion*</b>	---	<b>PASS</b>			---

\*\*\*\*\* To be continued \*\*\*\*\*

# TEST REPORT

Reference No. : SZ2021100531-1R1E

Date : Nov. 18, 2021

Page No.: 10 of 23

Test Item(s)	Unit	Result(s) <sup>Δ</sup>			Maximum Permissible Limit
		7#-1 <sup>st</sup>	7#-2 <sup>nd</sup>	7#-3 <sup>rd</sup>	
Soluble Aluminium	mg/kg	<0.1	<0.1	<0.1	1
Soluble Antimony	mg/kg	<0.01	<0.01	<0.01	0.04
Soluble Arsenic	mg/kg	<0.01	<0.01	<0.01	0.01
Soluble Barium	mg/kg	<0.1	<0.1	<0.1	1
Soluble Cadmium	mg/kg	<0.001	<0.001	<0.001	0.002
Soluble Chromium	mg/kg	<0.01	<0.01	<0.01	0.01
Soluble Cobalt	mg/kg	<0.01	<0.01	<0.01	0.05
Soluble Copper	mg/kg	<0.1	<0.1	<0.1	5
Soluble Iron	mg/kg	<5	<5	<5	48
Soluble Lead	mg/kg	<0.01	<0.01	<0.01	0.01
Soluble Lithium	mg/kg	<0.01	<0.01	<0.01	0.6
Soluble Manganese	mg/kg	<0.01	<0.01	<0.01	0.6
Soluble Mercury	mg/kg	<0.01	<0.01	<0.01	0.01
Soluble Nickel	mg/kg	<0.01	<0.01	<0.01	0.02
Soluble Zinc	mg/kg	<0.1	<0.1	<0.1	5
Soluble Tungsten	mg/kg	<0.01	<0.01	<0.01	0.05
Soluble Europium	mg/kg	<0.01	<0.01	<0.01	Sum≤0.05
Soluble Gadolinium	mg/kg	<0.01	<0.01	<0.01	
Soluble Lanthanum	mg/kg	<0.01	<0.01	<0.01	
Soluble Terbium	mg/kg	<0.01	<0.01	<0.01	
<b>Conclusion*</b>	---	<b>PASS</b>			---

\*\*\*\*\* To be continued \*\*\*\*\*

# TEST REPORT

Reference No. : SZ2021100531-1R1E

Date : Nov. 18, 2021

Page No.: 11 of 23

## 9. Specific Migration of Primary Aromatic Amine

**Test Method:** Sample preparation with reference to EN 13130-1:2004 with selection of simulant and condition, followed by analysis by LC/MS/MS & UV.

**Test Condition:** 3% Acetic acid, 2 hours at 70°C

**Surface area(dm<sup>2</sup>)/Volume(ml):**

1# 1/167

4# 1/167

7# 1/167

Test Item(s)	Unit	Result(s)			Maximum Permissible Limit
		1#-1 <sup>st</sup>	1#-2 <sup>nd</sup>	1#-3 <sup>rd</sup>	
4-Aminobiphenyl	mg/kg	<0.001	<0.001	<0.001	0.002
Benzidine	mg/kg	<0.001	<0.001	<0.001	0.002
4-Chloro-o-toluidine	mg/kg	<0.001	<0.001	<0.001	0.002
2-Naphthylamine	mg/kg	<0.001	<0.001	<0.001	0.002
O-Aminoazotoluene	mg/kg	<0.001	<0.001	<0.001	0.002
5-nitro-o-toluidine	mg/kg	<0.001	<0.001	<0.001	0.002
4-Chloroaniline	mg/kg	<0.001	<0.001	<0.001	0.002
4-methoxy-m-phenylenediamine	mg/kg	<0.001	<0.001	<0.001	0.002
4,4'-methylenedianiline	mg/kg	<0.001	<0.001	<0.001	0.002
3,3'-Dichlorobenzidine	mg/kg	<0.001	<0.001	<0.001	0.002
3,3'-Dimethoxybenzidine	mg/kg	<0.001	<0.001	<0.001	0.002
3,3'-Dimethylbenzidine	mg/kg	<0.001	<0.001	<0.001	0.002
4,4'-methylenedi-o-toluidine	mg/kg	<0.001	<0.001	<0.001	0.002
P-Cresidine	mg/kg	<0.001	<0.001	<0.001	0.002
4,4'-Methylene-bis-(2-Chloro-aniline)	mg/kg	<0.001	<0.001	<0.001	0.002
4,4'-oxydianiline	mg/kg	<0.001	<0.001	<0.001	0.002
4,4'-Thiodianiline	mg/kg	<0.001	<0.001	<0.001	0.002
O-Toluidine	mg/kg	<0.001	<0.001	<0.001	0.002
4-methyl-m-phenylenediamine	mg/kg	<0.001	<0.001	<0.001	0.002
2,4,5-Trimethylaniline	mg/kg	<0.001	<0.001	<0.001	0.002
4-Aminoazobenzene	mg/kg	<0.001	<0.001	<0.001	0.002
O-Anisidine	mg/kg	<0.001	<0.001	<0.001	0.002
Other Primary Aromatic Amine	mg/kg	<0.01	<0.01	<0.01	Sum≤0.01
<b>Conclusion*</b>	---	<b>PASS</b>			---

\*\*\*\*\* To be continued \*\*\*\*\*

STQ Testing Services Co., Ltd.

Add.: Building 1, 15 Yinzhu Road, High-new district, Suzhou, China 215129

Tel.: +86/(0)512 67991866

Fax: +86/(0)512 87661802

Web: www.stq-cert.com

Technical service: [TS@stq-cert.com](mailto:TS@stq-cert.com)

Customer service: [CS@stq-cert.com](mailto:CS@stq-cert.com)

# TEST REPORT

Reference No. : SZ2021100531-1R1E

Date : Nov. 18, 2021

Page No.: 12 of 23

Test Item(s)	Unit	Result(s) <sup>Δ</sup>			Maximum Permissible Limit
		4#-1 <sup>st</sup>	4#-2 <sup>nd</sup>	4#-3 <sup>rd</sup>	
4-Aminobiphenyl	mg/kg	<0.001	<0.001	<0.001	0.002
Benzidine	mg/kg	<0.001	<0.001	<0.001	0.002
4-Chloro-o-toluidine	mg/kg	<0.001	<0.001	<0.001	0.002
2-Naphthylamine	mg/kg	<0.001	<0.001	<0.001	0.002
O-Aminoazotoluene	mg/kg	<0.001	<0.001	<0.001	0.002
5-nitro-o-toluidine	mg/kg	<0.001	<0.001	<0.001	0.002
4-Chloroaniline	mg/kg	<0.001	<0.001	<0.001	0.002
4-methoxy-m-phenylenediamine	mg/kg	<0.001	<0.001	<0.001	0.002
4,4'-methylenedianiline	mg/kg	<0.001	<0.001	<0.001	0.002
3,3'-Dichlorobenzidine	mg/kg	<0.001	<0.001	<0.001	0.002
3,3'-Dimethoxybenzidine	mg/kg	<0.001	<0.001	<0.001	0.002
3,3'-Dimethylbenzidine	mg/kg	<0.001	<0.001	<0.001	0.002
4,4'-methylenedi-o-toluidine	mg/kg	<0.001	<0.001	<0.001	0.002
P-Cresidine	mg/kg	<0.001	<0.001	<0.001	0.002
4,4'-Methylene-bis-(2-Chloro-aniline)	mg/kg	<0.001	<0.001	<0.001	0.002
4,4'-oxydianiline	mg/kg	<0.001	<0.001	<0.001	0.002
4,4'-Thiodianiline	mg/kg	<0.001	<0.001	<0.001	0.002
O-Toluidine	mg/kg	<0.001	<0.001	<0.001	0.002
4-methyl-m-phenylenediamine	mg/kg	<0.001	<0.001	<0.001	0.002
2,4,5-Trimethylaniline	mg/kg	<0.001	<0.001	<0.001	0.002
4-Aminoazobenzene	mg/kg	<0.001	<0.001	<0.001	0.002
O-Anisidine	mg/kg	<0.001	<0.001	<0.001	0.002
Other Primary Aromatic Amine	mg/kg	<0.01	<0.01	<0.01	Sum≤0.01
<b>Conclusion*</b>	---	<b>PASS</b>			---

\*\*\*\*\* To be continued \*\*\*\*\*

STQ Testing Services Co., Ltd.

Add.: Building 1, 15 Yinzhu Road, High-new district, Suzhou, China 215129

Tel.: +86/(0)512 67991866

Fax: +86/(0)512 87661802

Web: www.stq-cert.com

Technical service: [TS@stq-cert.com](mailto:TS@stq-cert.com)

Customer service: [CS@stq-cert.com](mailto:CS@stq-cert.com)

# TEST REPORT

Reference No. : SZ2021100531-1R1E

Date : Nov. 18, 2021

Page No.: 13 of 23

Test Item(s)	Unit	Result(s) <sup>Δ</sup>			Maximum Permissible Limit
		7#-1 <sup>st</sup>	7#-2 <sup>nd</sup>	7#-3 <sup>rd</sup>	
4-Aminobiphenyl	mg/kg	<0.001	<0.001	<0.001	0.002
Benzidine	mg/kg	<0.001	<0.001	<0.001	0.002
4-Chloro-o-toluidine	mg/kg	<0.001	<0.001	<0.001	0.002
2-Naphthylamine	mg/kg	<0.001	<0.001	<0.001	0.002
O-Aminoazotoluene	mg/kg	<0.001	<0.001	<0.001	0.002
5-nitro-o-toluidine	mg/kg	<0.001	<0.001	<0.001	0.002
4-Chloroaniline	mg/kg	<0.001	<0.001	<0.001	0.002
4-methoxy-m-phenylenediamine	mg/kg	<0.001	<0.001	<0.001	0.002
4,4'-methylenedianiline	mg/kg	<0.001	<0.001	<0.001	0.002
3,3'-Dichlorobenzidine	mg/kg	<0.001	<0.001	<0.001	0.002
3,3'-Dimethoxybenzidine	mg/kg	<0.001	<0.001	<0.001	0.002
3,3'-Dimethylbenzidine	mg/kg	<0.001	<0.001	<0.001	0.002
4,4'-methylenedi-o-toluidine	mg/kg	<0.001	<0.001	<0.001	0.002
P-Cresidine	mg/kg	<0.001	<0.001	<0.001	0.002
4,4'-Methylene-bis-(2-Chloro-aniline)	mg/kg	<0.001	<0.001	<0.001	0.002
4,4'-oxydianiline	mg/kg	<0.001	<0.001	<0.001	0.002
4,4'-Thiodianiline	mg/kg	<0.001	<0.001	<0.001	0.002
O-Toluidine	mg/kg	<0.001	<0.001	<0.001	0.002
4-methyl-m-phenylenediamine	mg/kg	<0.001	<0.001	<0.001	0.002
2,4,5-Trimethylaniline	mg/kg	<0.001	<0.001	<0.001	0.002
4-Aminoazobenzene	mg/kg	<0.001	<0.001	<0.001	0.002
O-Anisidine	mg/kg	<0.001	<0.001	<0.001	0.002
Other Primary Aromatic Amine	mg/kg	<0.01	<0.01	<0.01	Sum≤0.01
<b>Conclusion*</b>	---	<b>PASS</b>			---

\*\*\*\*\* To be continued \*\*\*\*\*

STQ Testing Services Co., Ltd.

Add.: Building 1, 15 Yinzhu Road, High-new district, Suzhou, China 215129

Tel.: +86/(0)512 67991866

Fax: +86/(0)512 87661802

Web: www.stq-cert.com

Technical service: [TS@stq-cert.com](mailto:TS@stq-cert.com)

Customer service: [CS@stq-cert.com](mailto:CS@stq-cert.com)

# TEST REPORT

Reference No. : SZ2021100531-1R1E

Date : Nov. 18, 2021

Page No.: 14 of 23

## 10. Extractable Heavy Metals

**Test Method:** Sample prepared with reference to Technical Guide on Metals and Alloys used in food contact materials and articles of the 1<sup>st</sup> edition in 2013 and by Inductively Coupled Plasma Optical Emission Spectrometer(ICP-OES) and Graphite Furnace Atomic Absorption Spectrometry (GFAAS) analysis

**Test condition:** 70°C, 2 hours with Citric acid (5 g/L)

**Test sample No and description:** 6#<sup>Δ</sup> Silvery metal tank(Stainless steel) (MO6272)

Extractable Elements	The 1 <sup>st</sup> Result (mg/kg)	The 2 <sup>nd</sup> Result (mg/kg)	The 1 <sup>st</sup> + 2 <sup>nd</sup> Result (mg/kg)	7*Limit (mg/kg)	The 3rd Result (mg/kg)	Limit (mg/kg)
Silver (Ag)	N.D.	N.D.	N.D.	0.56	N.D.	0.08
Aluminium (Al)	N.D.	N.D.	N.D.	35	N.D.	5
Chromium (Cr)	N.D.	N.D.	N.D.	1.75	N.D.	0.250
Cobalt (Co)	N.D.	N.D.	N.D.	0.14	N.D.	0.02
Copper (Cu)	N.D.	N.D.	N.D.	28	N.D.	4
Iron (Fe)	N.D.	N.D.	N.D.	280	N.D.	40
Magnesium (Mg)	N.D.	N.D.	N.D.	---	N.D.	---
Manganese (Mn)	N.D.	N.D.	N.D.	12.6	N.D.	1.8
Molybdenum (Mo)	N.D.	N.D.	N.D.	0.84	N.D.	0.12
Nickel (Ni)	N.D.	N.D.	N.D.	0.98	N.D.	0.14
Tin (Sn)	N.D.	N.D.	N.D.	700	N.D.	100
Titanium (Ti)	N.D.	N.D.	N.D.	---	N.D.	---
Vanadium (V)	N.D.	N.D.	N.D.	0.07	N.D.	0.01
Zinc (Zn)	N.D.	N.D.	N.D.	35	N.D.	5
Antimony (Sb)	N.D.	N.D.	N.D.	0.28	N.D.	0.04
Arsenic (As)	N.D.	N.D.	N.D.	0.014	N.D.	0.002
Barium (Ba)	N.D.	N.D.	N.D.	8.4	N.D.	1.2
Beryllium (Be)	N.D.	N.D.	N.D.	0.07	N.D.	0.01
Cadmium (Cd)	N.D.	N.D.	N.D.	0.035	N.D.	0.005
Lead (Pb)	N.D.	N.D.	N.D.	0.07	N.D.	0.010
Lithium (Li)	N.D.	N.D.	N.D.	0.336	N.D.	0.048
Mercury (Hg)	N.D.	N.D.	N.D.	0.021	N.D.	0.003
Thallium (Tl)	N.D.	N.D.	N.D.	0.0007	N.D.	0.0001

\*\*\*\*\* To be continued \*\*\*\*\*

STQ Testing Services Co., Ltd.

Add.: Building 1, 15 Yinzhu Road, High-new district, Suzhou, China 215129

Tel.: +86/(0)512 67991866

Fax: +86/(0)512 87661802

Web: www.stq-cert.com

Technical service: [TS@stq-cert.com](mailto:TS@stq-cert.com)

Customer service: [CS@stq-cert.com](mailto:CS@stq-cert.com)



# TEST REPORT

Reference No. : SZ2021100531-1R1E

Date : Nov. 18, 2021

Page No.: 15 of 23

**Test condition:** 70°C, 2 hours with Citric acid (5 g/L)

**Test sample No and description:** 11#<sup>Δ</sup> Silvery metal filter(Stainless steel) (MO6272)

Extractable Elements	The 1 <sup>st</sup> Result (mg/kg)	The 2 <sup>nd</sup> Result (mg/kg)	The 1 <sup>st</sup> + 2 <sup>nd</sup> Result (mg/kg)	7*Limit (mg/kg)	The 3rd Result (mg/kg)	Limit (mg/kg)
Silver (Ag)	N.D.	N.D.	N.D.	0.56	N.D.	0.08
Aluminium (Al)	N.D.	N.D.	N.D.	35	N.D.	5
Chromium (Cr)	N.D.	N.D.	N.D.	1.75	N.D.	0.250
Cobalt (Co)	N.D.	N.D.	N.D.	0.14	N.D.	0.02
Copper (Cu)	N.D.	N.D.	N.D.	28	N.D.	4
Iron (Fe)	N.D.	N.D.	N.D.	280	N.D.	40
Magnesium (Mg)	N.D.	N.D.	N.D.	---	N.D.	---
Manganese (Mn)	N.D.	N.D.	N.D.	12.6	N.D.	1.8
Molybdenum (Mo)	N.D.	N.D.	N.D.	0.84	N.D.	0.12
Nickel (Ni)	N.D.	N.D.	N.D.	0.98	N.D.	0.14
Tin (Sn)	N.D.	N.D.	N.D.	700	N.D.	100
Titanium (Ti)	N.D.	N.D.	N.D.	---	N.D.	---
Vanadium (V)	N.D.	N.D.	N.D.	0.07	N.D.	0.01
Zinc (Zn)	N.D.	N.D.	N.D.	35	N.D.	5
Antimony (Sb)	N.D.	N.D.	N.D.	0.28	N.D.	0.04
Arsenic (As)	N.D.	N.D.	N.D.	0.014	N.D.	0.002
Barium (Ba)	N.D.	N.D.	N.D.	8.4	N.D.	1.2
Beryllium (Be)	N.D.	N.D.	N.D.	0.07	N.D.	0.01
Cadmium (Cd)	N.D.	N.D.	N.D.	0.035	N.D.	0.005
Lead (Pb)	N.D.	N.D.	N.D.	0.07	N.D.	0.010
Lithium (Li)	N.D.	N.D.	N.D.	0.336	N.D.	0.048
Mercury (Hg)	N.D.	N.D.	N.D.	0.021	N.D.	0.003
Thallium (Tl)	N.D.	N.D.	N.D.	0.0007	N.D.	0.0001

\*\*\*\*\* To be continued \*\*\*\*\*

STQ Testing Services Co., Ltd.

Add.: Building 1, 15 Yinzhu Road, High-new district, Suzhou, China 215129

Tel.: +86/(0)512 67991866

Fax: +86/(0)512 87661802

Web: www.stq-cert.com

Technical service: [TS@stq-cert.com](mailto:TS@stq-cert.com)

Customer service: [CS@stq-cert.com](mailto:CS@stq-cert.com)

# TEST REPORT

Reference No. : SZ2021100531-1R1E

Date : Nov. 18, 2021

Page No.: 16 of 23

**Remark:**

1. The following table is the MDL of the Extractable Heavy Metals testing

Extractable Elements	MDL(mg/kg)	Extractable Elements	MDL(mg/kg)	Extractable Elements	MDL(mg/kg)
Silver (Ag)	0.01	Molybdenum (Mo)	0.01	Barium (Ba)	0.10
Aluminium (Al)	0.10	Nickel (Ni)	0.01	Beryllium (Be)	0.01
Chromium (Cr)	0.01	Tin (Sn)	0.01	Cadmium (Cd)	0.001
Cobalt (Co)	0.01	Titanium (Ti)	0.01	Lead (Pb)	0.001
Copper (Cu)	0.10	Vanadium (V)	0.01	Lithium (Li)	0.01
Iron (Fe)	5.00	Zinc (Zn)	0.10	Mercury (Hg)	0.001
Magnesium (Mg)	0.01	Antimony (Sb)	0.01	Thallium (Tl)	0.0001
Manganese (Mn)	0.01	Arsenic (As)	0.001	---	---

2. MDL = Method Detection Limit.

3. N.D.= Not detected, less than MDL.

4. The submitted sample/component is a repeated use article. The migration test was carried out three times on the same article. The sum of the results of the first and second tests should not exceed seven times the limit (Result 1<sup>st</sup> test + Result 2<sup>nd</sup> test <7\* limit) and the Result 3<sup>rd</sup> should not exceed the limit.

**11. Peroxide Value**

**Test Method:** With reference to European pharmacopoeia, 2005 Appendix X F. Peroxide Value method A.

Test Item(s)	Result(s)	Maximum Permissible Limit
	5# <sup>Δ</sup>	
Peroxide Value	Absent	Absent

**12. Volatile Organic Matter (VOM)**

**Test Method:** With reference to French Arrêté du November 1992 Annex III.

**Test Condition:** 200°C, 4 hours

Test Item(s)	Unit	Result(s)	Maximum Permissible Limit
		5# <sup>Δ</sup>	
Volatile organic matter (VOM)	% w/w	0.28	0.5

\*\*\*\*\* To be continued \*\*\*\*\*



# TEST REPORT

Reference No. : SZ2021100531-1R1E

Date : Nov. 18, 2021

Page No.: 17 of 23

### 13. Specific Migration of Tin

**Test Method:** Sample preparation in 3% Acetic acid at 70°C for 2 hours, followed by analysis using Inductively Coupled Plasma Optical Emission Spectrometer.

**Surface area(dm<sup>2</sup>)/Volume(ml):** 1/167

Test Item(s)	Unit	Result(s) <sup>Δ</sup>			Maximum Permissible Limit
		5#-1 <sup>st</sup>	5#-2 <sup>nd</sup>	5#-3 <sup>rd</sup>	
Specific migration of Tin	mg/kg	<0.01	<0.01	<0.01	0.1
<b>Conclusion*</b>	---	<b>PASS</b>			---

### 14. Bisphenol-A (BPA) Content

**Test Method:** With reference to EPA 3550C-2007, Analysis was performed by LC.

Test Item(s)	Unit	MDL	Result(s)	Limit
			5# <sup>Δ</sup>	
Bisphenol-A (BPA)	mg/kg	0.1	N.D.	Absent

**Remark:** \*According to Regulation (EU) No 10/2011 and its amendment (EU) 2020/1245, for repeated use materials and articles:

- 1) The applicable overall migration test shall be carried out three times on a single sample. The overall migration in the second test shall be lower than in the first test, and the overall migration in the third test shall be lower than in the second test. Compliance with the overall migration limit shall be verified on the basis of the level of the overall migration found in the third test.
- 2) Specific migration test(s) shall be carried out three times on a single sample. Compliance shall than be verified on the basis of the level of the migration found in the third test and on the basis of the stability of the material or article from the first to the third migration test. The stability of the material shall be considered insufficient if migration is observed above the level of detection in any of the three migration tests, and increases from the first migration test to the third migration test. In case of insufficient stability, compliance of the material shall not be established even in case the specific migration limit is not exceeded in any of the three tests. Irrespective of the above rules, a material or article shall never be considered to comply with the Regulation if in the first test a substance that is prohibited from migrating or from being released in detectable quantities.

\*\*\*\*\* To be continued \*\*\*\*\*

## TEST REPORT

Reference No. : SZ2021100531-1R1E

Date : Nov. 18, 2021

Page No.: 18 of 23

- Note :**
- 1) MDL = Method Detection Limit.
  - 2) N.D. = Not detected, less than MDL.
  - 3) “---” = Not Regulated.
  - 4) % = Percentage by weight.
  - 5) <sup>△</sup> The test results are quoted from the results of SZ2021060333-1E.
  - 6) <sup>▲</sup> These tests were conducted from the new sample, and the test period was Nov. 11, 2021 to Nov. 17, 2021.

### Test Part Description:

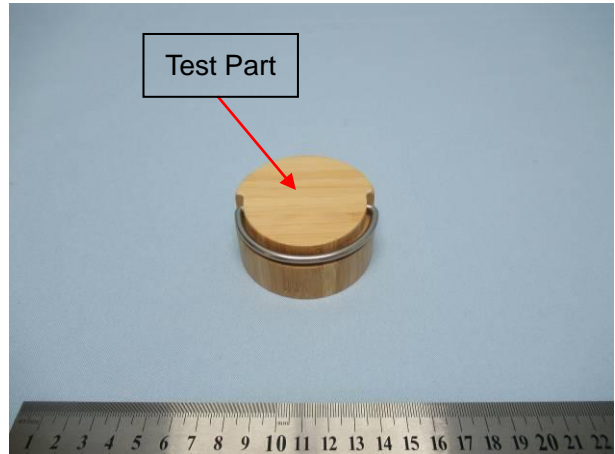
- 1# Black plastic lid(PP) (MO6371)
- 2# Light brown bamboo lid (MO6272)
- 3# Silvery metal handle (MO6272)
- 4# Beige plastic inner cover(PP) (MO6272)
- 5# Transparent silicone ring (MO6272)
- 6# Silvery metal tank(Stainless steel) (MO6272)
- 7# Gray plastic inner cover(PP) (MO9421)
- 8# Black plastic bottom (MO6272/MO9421)
- 9# Silvery metal filter (MO9421)
- 10# Silvery metal lid (MO9421)
- 11# Silvery metal filter(Stainless steel) (MO6272)
- 12# Transparent coating (MO6360)
- 13# Brown/light brown wood shell (MO6360)

\*\*\*\*\* To be continued \*\*\*\*\*

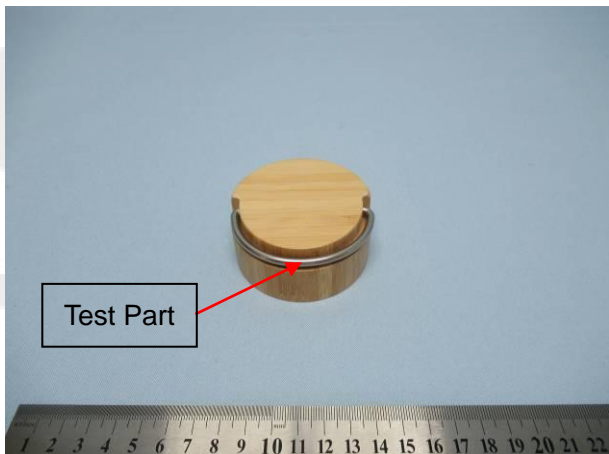
## SAMPLE PHOTOS



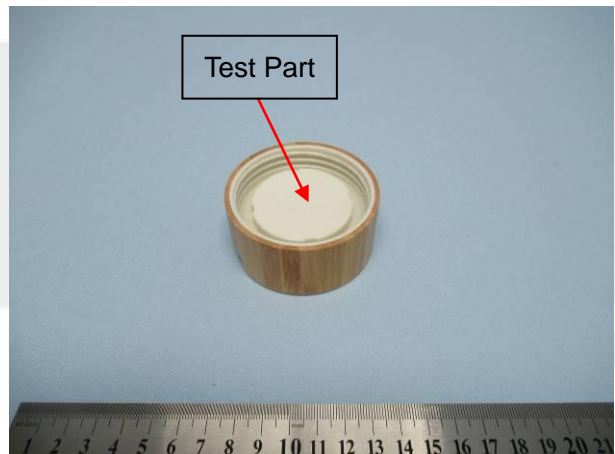
1#



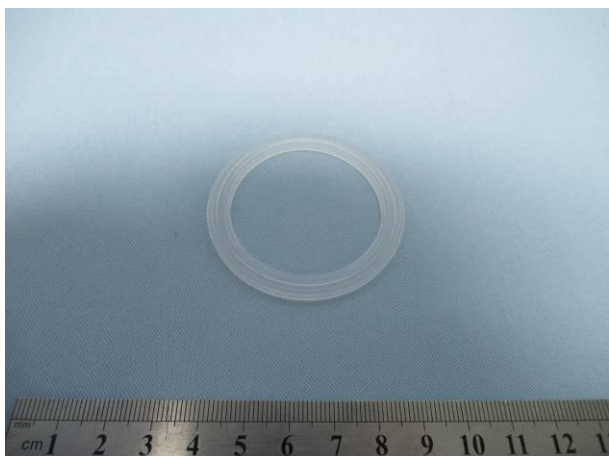
2#



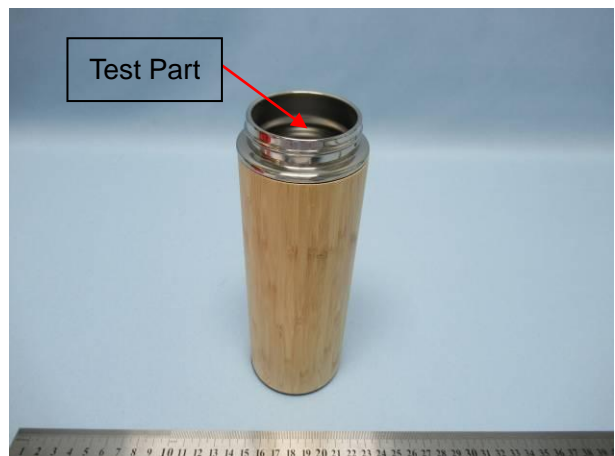
3#



4#



5#



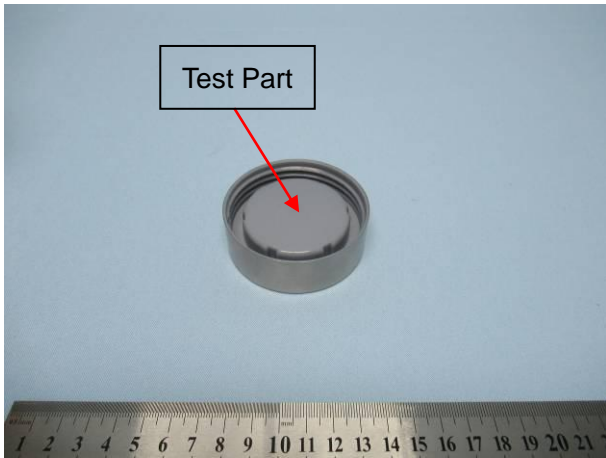
6#

# TEST REPORT

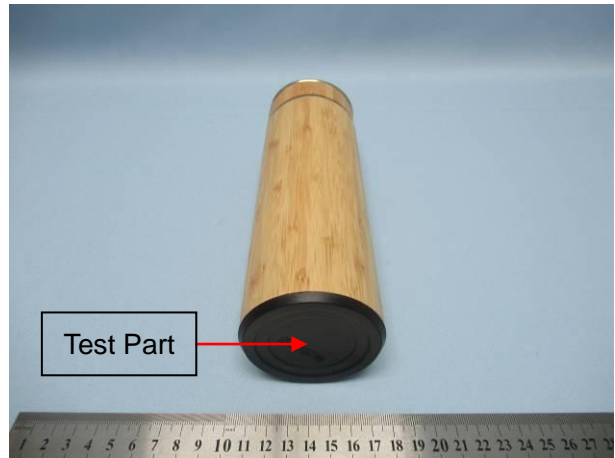
Reference No. : SZ2021100531-1R1E

Date : Nov. 18, 2021

Page No.: 20 of 23



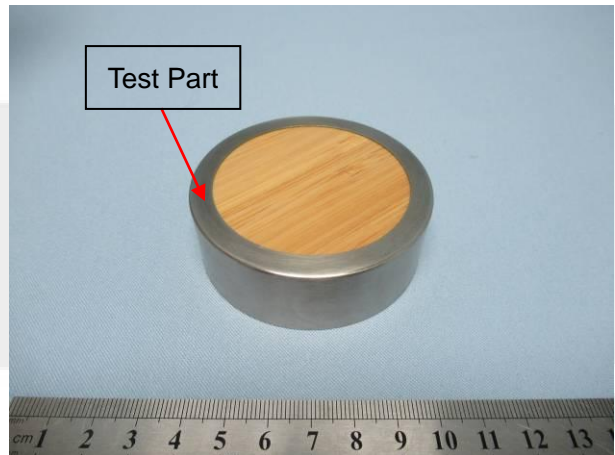
7#



8#



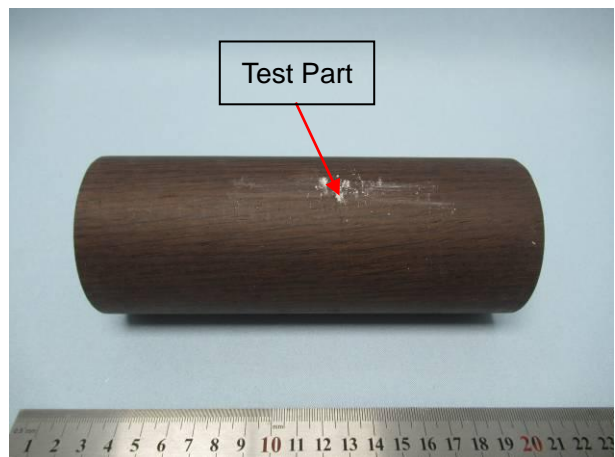
9#



10#



11#



12#

# TEST REPORT

Reference No. : SZ2021100531-1R1E

Date : Nov. 18, 2021

Page No.: 21 of 23



13#

## PRODUCT PHOTOS



\*\*\*\*\* END OF REPORT \*\*\*\*\*

STQ Testing Services Co., Ltd.

Add.: Building 1, 15 Yinzhu Road, High-new district, Suzhou, China 215129

Tel.: +86/(0)512 67991866

Fax: +86/(0)512 87661802

Web: [www.stq-cert.com](http://www.stq-cert.com)

Technical service: [TS@stq-cert.com](mailto:TS@stq-cert.com)

Customer service: [CS@stq-cert.com](mailto:CS@stq-cert.com)





# TEST REPORT

Reference No. : SZ2021100531-1R1E

Date : Nov. 18, 2021

Page No.: 22 of 23

## GENERAL CONDITIONS OF SERVICES

STQ Testing Services Co.,Ltd. (hereinafter "STQ"), The testing or examining under the request of the customer should obey terms as follow, according to regulation of "Contract Law of the People's Republic of China" on processing and undertaking contract, our company have legal right of termination without any reason and have the right to accept or refuse testing or examining request:

1. STQ only acts for the person or body originating the instructions (the "Clients"). No other party is entitled to give instructions, particularly on the scope of testing or delivery of report or certificate, unless authorized by the Clients.
2. Sample recycling: when the testing or examining is finished, the customer should recycle the sample. Within 30 days after issuing of testing report, if the customer could not recycle the sample or send notification of sample recycling in written (for example, if the sample belongs to consumables, toxic drugs, dangerous goods and other items that are not suitable for long-term storage, such as semi-finished products and fragile samples such as liquids and powders, the retention period will be shortened to 7 days). After the retention period, STQ has the right to dispose of the sample arbitrarily without paying compensation or compensation to the customer and take no responsibility for the consequences that damages the customer's trade secrets and intellectual property rights due to the loss of the sample.
3. The delivery and return fee of the samples which need to do testing at STQ should be paid by the client. STQ will not bear the responsibility for the testing error that is caused by transporting, packaging and labelling.
4. The Clients shall always comply with the following before or during STQ providing its services:
  - a) provide sample(s) and relevant data, at the same time, guarantee the consistence of the sample(s)' name they declared with the sample(s) or the goods provided. Otherwise, STQ will not bear any relevant responsibilities;
  - b) giving timely instructions and adequate information to enable STQ to perform the services effectively;
  - c) supply, when requested by STQ, any equipment and personnel for the performance of the services;
  - d) take all necessary steps to eliminate or remedy any obstruction in the performance of the services;
  - e) inform STQ in advance of any hazards or dangers, actual or potential, associated with any order of samples or testing;
  - f) provide all necessary access for STQ's representative to enable the required services to be performed effectively;
  - g) ensure all essential steps are taken for safety of working conditions, sites and installations during the performance of services;
  - h) fully discharge all its liabilities under any contract like sales contract with a third party, whether or not a report or certificate has been issued by STQ, failing which STQ shall be under no obligation to the Clients.
5. Subject to STQ's accepting the Client's instructions, STQ will issue reports or certificates which reflect statements of opinion made with due care within the scope of instructions but STQ is not obliged to report upon any facts outside the instructions, if there were any dissidence about the report or certificate, the Client should provide the written declaration to STQ within 15 days after the date receiving the report or certificate, otherwise, STQ will not hear the case after the date limit.
6. STQ is irrevocably authorized by the Clients to deliver at its discretion the report or the certificate to any third party when instructed by the Clients or where it implicitly follows from circumstances, trade custom, usage or practice as determined by STQ.
7. A test report will be issued in confidence to the Clients and it will be strictly treated as such by STQ. It may not be reproduced either in its entirety or in part and it may not be used for advertising or other unauthorized purposes without the written consent of STQ. The Clients to whom the Report is issued may, however, show or send it, or a certified copy thereof prepared by STQ, to his customer, supplier or other persons directly concerned. STQ will not, without the consent of the Clients, enter into any discussion or correspondence with any third party concerning the contents of the report unless required by the relevant governmental authorities, laws or court orders.
8. Applicants wishing to use STQ's reports in court proceedings or arbitration shall inform STQ to that effect prior to submitting the sample for testing.
9. The report will refer only to the sample tested and will not apply to the bulk, unless the sampling has been carried out by STQ and is stated as such in the Report. Also, the report is only for reference.
10. Any documents containing engagements between the Clients and third parties like contracts of sale, letters of credit, bills of lading, etc. are regarded as information for STQ only and do not affect the scope of the services or the obligations accepted by STQ.
11. If the Clients do not specify the methods/standards to be applied, STQ will choose the appropriate ones and further information regarding the methods can be obtained by direct contact with STQ, for the in-house method, STQ will only provide the summary.
12. No liability shall be incurred by and no claim shall be made against STQ or its servants, agents, employees or independent contractors in respect of any loss or damage to any such materials, equipment and property occurring whilst at STQ or any work places in which the testing is carried out, or in the course of transit to or from STQ or the said work places, whether or not resulting from any acts, neglect or default on the part of any such servants, agents, employees or independent contractors of STQ.
13. STQ will not be liable, or accept responsibility for any loss or damage howsoever arising from the use of information contained in any of its reports or in any communication whatsoever about its said tests or investigations.
14. Except for term 11 and term 12, if the test sample is damaged due to the negligence of ZOTAC, the total compensation for loss and damage to the sample or loss to the customer shall not exceed twice of the test service fee.
15. In the event of STQ prevented by any cause outside STQ's control from performing any service for which an order has been given or an agreement made, the Clients shall pay to STQ:
  - a) the amount of all abortive expenditure actually made or incurred;
  - b) a proportion of the agreed fee or commission equal to the proportion (if any) of the service actually carried out by STQ, and STQ shall be relieved of all responsibility whatsoever for the partial or total non-performance of the required service.

STQ Testing Services Co., Ltd.

Add.: Building 1, 15 Yinzhu Road, High-new district, Suzhou, China 215129

Tel.: +86/(0)512 67991866

Fax: +86/(0)512 87661802

Web: [www.stq-cert.com](http://www.stq-cert.com)

Technical service: [TS@stq-cert.com](mailto:TS@stq-cert.com)

Customer service: [CS@stq-cert.com](mailto:CS@stq-cert.com)



## TEST REPORT

Reference No. : SZ2021100531-1R1E

Date : Nov. 18, 2021

Page No.: 23 of 23

16. STQ shall be discharged from all liabilities for all claims for loss, damage or expense unless suit is brought within one calendar year after the date of the performance by STQ of the service relating to the claim or in the event of any alleged non-performance within one year of the date when such service should have been completed.
17. The Clients acknowledge that STQ does not, either by entering into a contract or by performing service, assume or undertake to discharge any duty of the Clients to any other persons. STQ is neither an insurer nor a guarantor and disclaims all liability in such capacity.
18. The Clients shall hold harmless and indemnify STQ and its officers, employees, agents or independent contractors against all claims made by any third party for loss, damage or expense of whatsoever nature including reasonable legal expenses relating to the performance or non-performance of any services to the extent that the aggregate of any such claims relating to any one service exceed the limits mentioned in Clause 13.
19. Any unauthorized alteration, forgery or falsification of the content or appearance of the report/certificate is unlawful and offenders may be prosecuted to the fullest extent of the law; in the event of improper use of the report, STQ reserves the right to withdraw it, and to adopt any other measures which may be appropriate.
20. Samples are deposited with and accepted by STQ on the basis that either they are insured by the Clients or the Clients assumes entire responsibility for loss through fire, theft, burglary or for damages arising in the course of analysis or handling, without recourse whatsoever to STQ or its servants, agent, employees or independent contractors.
21. If the requirements of the Clients require the analysis of samples by the Clients' or any third party's laboratory, STQ will only convey the result of the analysis without responsibility for its accuracy. If STQ is only able to witness an analysis by the Clients' or any third Party's laboratory STQ will only confirm that the correct sample has been analyzed without responsibility for the accuracy of any analysis or results.
22. In the event of any unforeseen additional time or costs being incurred in the course of carrying out any of its services, STQ shall be entitled to charge the Clients additional fees to reflect the additional time and costs incurred.
23. All rights (including but not limited to copyright) in any reports, certificates or other materials produced by STQ in the course of providing its services shall remain vested in STQ.
24. Unless otherwise agreed in written, payment should be arranged within 10 days after the invoice date or the debit note date. If the payment is overdue, the overdue penalty shall be calculated at 1% per day of the unpaid part till the actual payment date. All expenses, costs and losses incurred by STQ as a result of collecting or claiming the fees owed shall be borne by the customer, including but not limited to attorney fees, litigation fees, preservation fees, preservation guarantee fees, travel expenses, etc.
25. Test results may be transmitted by electronic means at the Client's request. However, it should be noted that electronic transmission cannot guarantee the information contained will not be lost, delayed or intercepted by third party. STQ is not liable for any disclosure, error or omission in the content of such messages as a result of electronic transmission.
26. If necessary, STQ may subcontract part of or all tests to competent subcontractors. If no objection is raised at the time of the Clients submitting the application, STQ shall assume the Client's approval.
27. This report/certificate does not relieve sellers/suppliers from their contractual responsibility with regards to the quality/quantity of this delivery nor does it prejudice the Client's right to claim towards sellers/suppliers for compensation for any apparent and/or hidden defects not detected during STQ's random inspection or testing or audit.
28. The testing data and result(s) in this report is(are) just for scientific research, education, internal quality control and product development etc.
29. STQ reserves the right to include Special Conditions in addition to the foregoing General Conditions if warranted by the particular circumstances of the required test or investigation [this clause is only effective when the other party has been informed].
30. The foregoing General Conditions shall in all respects be governed, construed, interpreted and operated in accordance with the relevant Chinese laws and regulations. Unless otherwise agreed, the arbitration shall take place in P. R. C
31. These General Condition have been drafted in Chinese and may be translated into other languages. In the event of any discrepancy, the Chinese version shall prevail.
32. In general sample will be stored for 30 days. But for liquid, powder, etc semi-product & fragile product, it will be stored only for 7 days.

STQ Testing Services Co., Ltd.

Add.: Building 1, 15 Yinzhu Road, High-new district, Suzhou, China 215129

Tel.: +86/(0)512 67991866

Fax: +86/(0)512 87661802

Web: [www.stq-cert.com](http://www.stq-cert.com)

Technical service: [TS@stq-cert.com](mailto:TS@stq-cert.com)

Customer service: [CS@stq-cert.com](mailto:CS@stq-cert.com)