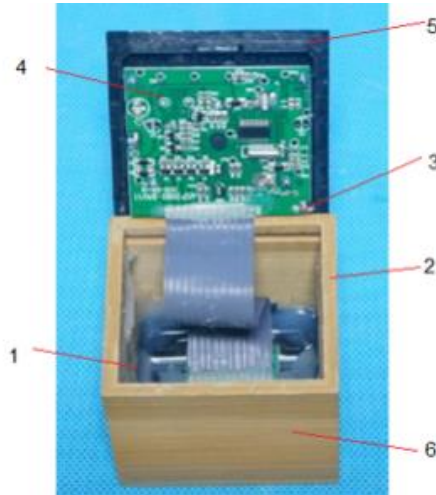


# SUSTAINABILITY DECLARATION



**Item number**  
MO9922

**Item description**

White LED time display alarm clock and temperature display in bamboo casing. AC-DC 2 pin plug adapter included.

**Material content**

Part	Component description	Position	Material	Weight %
1	Black mirror	display	Poly (methyl methacrylate)	10,00%
2	case	case	Bamboo	50,00%
3	Screw	PCB	stainless steel	5,00%
4	Printed circuit board with component (PCBA)	internal	Printed circuit board (PCBA)	25,00%
5	Button	case	Acrylonitrile Butadiene Styrene (ABS)	5,00%
6	Battery cover	case	Acrylonitrile Butadiene Styrene (ABS)	5,00%
			<b>Total</b>	<b>100,00%</b>

**Material information**

	Petrochemical	Partly Biobased	Biobased
Non-biodegradable	EVA, PA, PE, PP, PET, RPET, PS, PVC, <b>ABS</b> , VI, Silicone, POM, ACR, PU, PC, PVC, TPE, LDPE, TPR, LDPE, Nylon	PLA/ABS, Wheat Straw/PP, Wheat Straw/ABS, Bamboo/PP, Coffee Husk/PP, Coffee Husk/ABS	Glass, Basalt stone
Biodegradable (industrial)	PBAT	PLA/BPAT	<b>Bamboo</b> , Wheat Straw, PLA, Paper, Paper Straw, PLA/Wheat Straw, PLA/Bamboo, Cork, Cotton, Cocos Oil, Rubber, Hemp, Wood, Jute, Coconut Shell, Natural Rubber, Leather

<b>Recyclability of material</b>	<input checked="" type="checkbox"/> Yes	<input type="checkbox"/> No
----------------------------------	---	-----------------------------

**Renewable source**

Recycled material	Natural material	Reused waste material
<input type="checkbox"/> Yes <input checked="" type="checkbox"/> No	<input checked="" type="checkbox"/> Yes <input type="checkbox"/> No	<input type="checkbox"/> Yes <input checked="" type="checkbox"/> No

**End of life suggestion:**



**Trademarks of material**

n.a.

**Fulfilled technical standard**

This item is compliant with the European legislation and regulations applicable to this item. A Declaration of Conformity (DOC)

**Quality certifications/ social audits factory**



**Packaging and Transport**

Piece	Inner Carton	Carton	mo box	Polybag	Packaging
1	-	50	-	-	Each article packed in a bubble bag

We have dedicated partnerships with our carriers. Who have shown their commitments to reduce GHG emissions and have ambitious targets concerning carbon-neutral deliveries and climate-neutral logistics solutions.

**midocean**  
Mrs. P. Varela



Buying & Portfolio Director