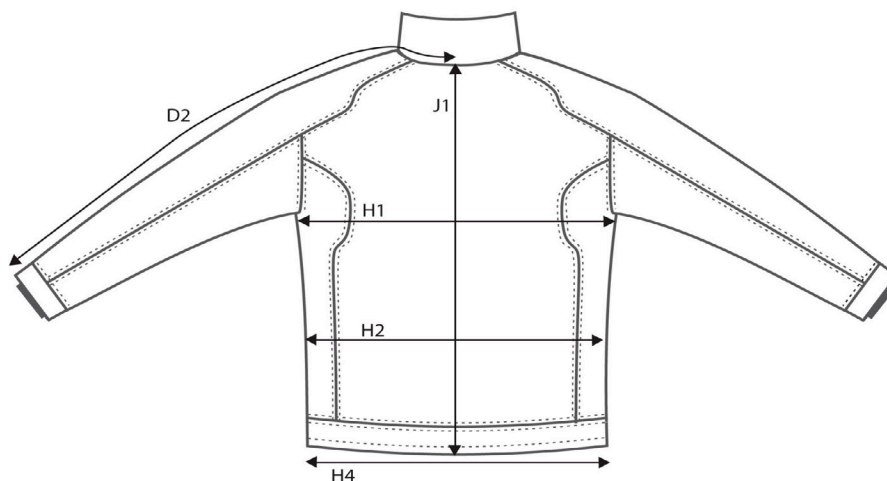
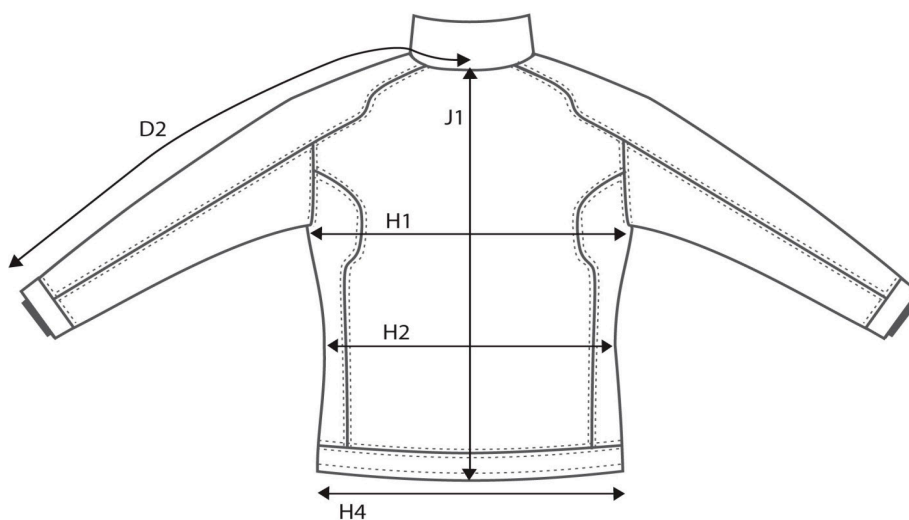


SIZE AND FIT: DUXBURY



DUXBURY Mens

Base size: M / Measurement (in cm)	Diagram	S	M	L	XL	XXL	3XL	4XL
CENTRE BACK TO END OF SLEEVE	D2	87	89,5	92	94,5	97	99,5	102
1/2 CHEST WIDTH at armhole	H1	54	57	60	63	66	69	72
1/2 BOTTOM WIDTH	H4	50	53	56	59	62	65	68
FULL LENGTH at centre back	J1	67	69	71	73	75	77	79



DUXBURY Ladies

Base size: M / Measurement (in cm)	Diagram	XS	S	M	L	XL	XXL	3XL
CENTRE BACK TO END OF SLEEVE	D2	82,5	83,75	85	86,25	87,5	88,75	90
1/2 CHEST WIDTH at armhole	H1	46	48	50	52	54	56	59
1/2 WAIST	H2	43	45	47	49	51	53	56
1/2 BOTTOM WIDTH	H4	49	51	53	55	57	59	62
FULL LENGTH at centre back	J1	60	62	64	66	68	70	72