



SMART FRAME

SF Light Box 100
SF Light Box 50
SMART FRAME 44
SMART FRAME 27
SMART FRAME 19
SF Cube Box

Smart Frame

exhibition systems

SMART FRAME

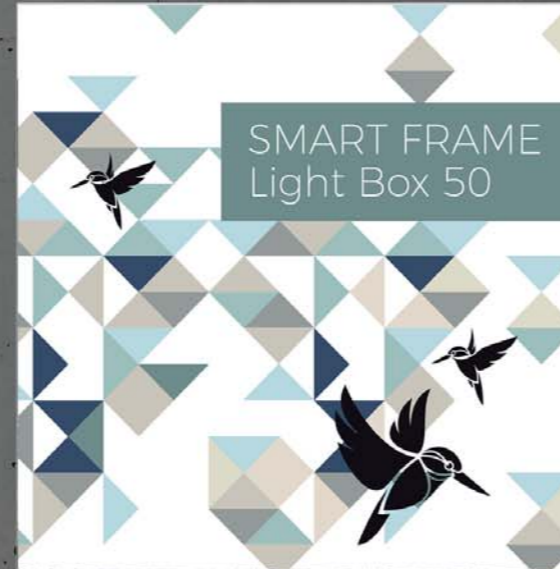
Do you desire simple and quick solutions which will bedazzle people?

Thanks to Smart Frame system, you will create ideal stands and displays in an easy and quick manner.

This is a system, in which textile is stretched on an aesthetic aluminium frame,

in the centre of which we place LED lighting.

Evenly illuminated graphics present amazing effects that will certainly attract the attention of even the most demanding customers.



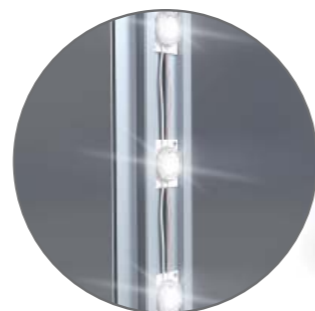
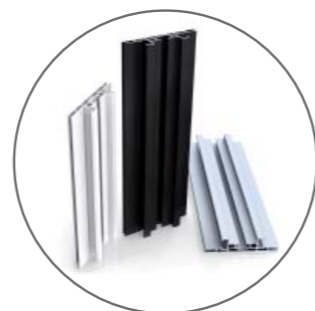
SMART FRAME Light Box 100

Backlit standing panel built from an aluminium frame and high quality graphics printed on textile. 100 mm frame is easily put together in the corners, and the textile finished with a silicone rubber band is inserted into the profile.

LEDs are placed inside on profile's longer edges.

- Silver, black or white aluminium profiles.
- Internal LED lighting.
- One- or double-sided textile graphics.
- Graphics inserted onto silicone rubber.
- Additional feet or wall and ceiling slings.
- Reinforcing cross-bars for larger formats.

Model / Code	↗ ↘ (W) x (H) x (D) mm
SFLB100 - 70/100	700 x 1000 x 100
SFLB100 - 100/100	1000 x 1000 x 100
SFLB100 - 100/150	1000 x 1500 x 100
SFLB100 - 100/200	1000 x 2000 x 100
SFLB100 - 100/250	1000 x 2500 x 100
SFLB100 - 150/200	1500 x 2000 x 100
SFLB100 - 150/250	1500 x 2500 x 100
SFLB100 - 200/200	2000 x 2000 x 100
SFLB100 - 200/250	2000 x 2500 x 100
SFLB100 - 300/200	3000 x 2000 x 100
SFLB100 - 300/250	3000 x 2500 x 100

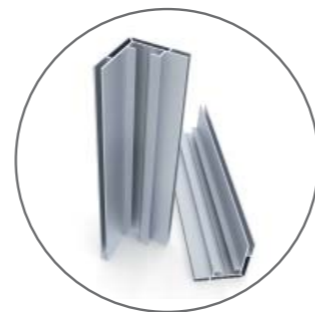


SMART FRAME Light Box 50

Backlit thin panel built from an aluminium frame and high quality graphics printed on textile.
Ideal as backlit wall images also of a large format.
50 mm frame is easily put together in the corners, and the textile finished with a silicone rubber band is inserted into the profile.
LEDs are placed inside on rear wall made of rigid composite plate.

- Silver aluminium profiles.
- Internal LED lighting.
- One-sided textile graphics.
- Graphics inserted into silicone rubber.
- Additional wall and ceiling slings.

Model / Code	↗ ↘ (W) x (H) x (D) mm
SFLB50 - 50/70	500 x 700 x 50
SFLB50 - 70/100	700 x 1000 x 50
SFLB50 - 100/100	1000 x 1000 x 50



SMART FRAME 44

A system built from 44 mm aluminium frame and high quality graphics printed on textile.
A frame is easily put together in the corners, and the textile finished with a silicone rubber band is inserted into the profile.
An ideal profile for constriction of walls and displays.

- Silver, black or white aluminium profiles.
- One- or double-sided textile graphics.
- Graphics inserted onto silicone rubber.
- Additional feet or wall and ceiling slings.
- Reinforcing cross-bars for larger formats

Model / Code	↗ (W) x (H) x (D) mm
SF44 - 70/100	700 x 1000 x 44
SF44 - 100/100	1000 x 1000 x 44
SF44 - 100/150	1000 x 1500 x 44
SF44 - 100/200	1000 x 2000 x 44
SF44 - 100/250	1000 x 2500 x 44
SF44 - 150/200	1500 x 2000 x 44
SF44 - 150/250	1500 x 2500 x 44
SF44 - 200/200	2000 x 2000 x 44
SF44 - 200/250	2000 x 2500 x 44
SF44 - 300/200	3000 x 2000 x 44
SF44 - 300/250	3000 x 2500 x 44

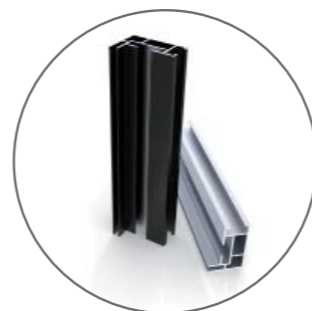


SMART FRAME 27

Thicker profile to create graphics mounted on the wall
Built from 27 mm aluminium profile and high quality graphics
printed on textile inserted into a frame.
Ideal as wall images of a large format.

- Silver, black or white aluminium profiles.
- One-sided textile graphics.
- Graphics inserted onto silicone rubber.
- Additional wall and ceiling slings or assembly directly to the wall.
- Suspension from the ceiling possible.
- Reinforcing cross-bars for larger formats.

Model / Code	↗ (W) x (H) x (D) mm
SF27 - 50/70	500 x 700 x 27
SF27 - 70/100	700 x 1000 x 27
SF27 - 100/100	1000 x 1000 x 27
SF27 - 100/150	1000 x 1500 x 27
SF27 - 150/150	1500 x 1500 x 27
SF27 - 100/200	1000 x 2000 x 27
SF27 - 150/200	1500 x 2000 x 27
SF27 - 200/200	2000 x 2000 x 27
SF27 - 300/200	3000 x 2000 x 27



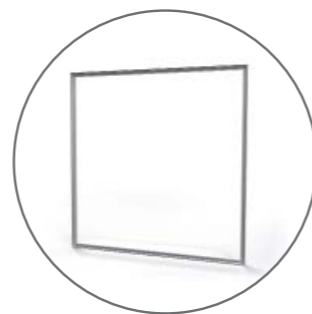
SMART FRAME 19

The thinnest system to create graphics mounted on the wall built from a 19 mm aluminium profile and high quality graphics printed on textile inserted into a frame.

Ideal as wall images also of a large format.

- Silver, black or white aluminium profiles.
- One-sided textile graphics.
- Graphics inserted onto silicone rubber.
- Additional wall and ceiling slings or assembly directly to the wall.

Model / Code	↗↘ (W) x (H) x (D) mm
SF19 - 50/70	500 x 700 x 19
SF19 - 70/100	700 x 1000 x 19
SF19 - 100/100	1000 x 1000 x 19
SF19 - 100/150	1000 x 1500 x 19
SF19 - 150/150	1500 x 1500 x 19
SF19 - 100/200	1000 x 2000 x 19
SF19 - 150/200	1500 x 2000 x 19
SF19 - 200/200	2000 x 2000 x 19



SMART FRAME Cube Box

Smart Frame Cube Box system allows creating 3D blocks with graphics on all sides.

Aluminium profiles are mounted by means of corners, creating skeleton.

High quality graphics is printed on textile and inserted into a frame from each side.

Also possible is LED back lighting which provides amazing visual effects.

- Silver aluminium profiles.
- Textile graphics from each side.
- Graphics inserted onto silicone rubber.
- Additional ceiling slings.
- Reinforcing cross-bars for larger formats.
- Possibility of led back lighting.

Model / Code	↗ ↘ (W) x (H) x (D) mm
SFCB50-50/50	500 x 700 x 50
SFCB70-70/70	700 x 1000 x 50
SFCB100-100/100	1000 x 1000 x 50

